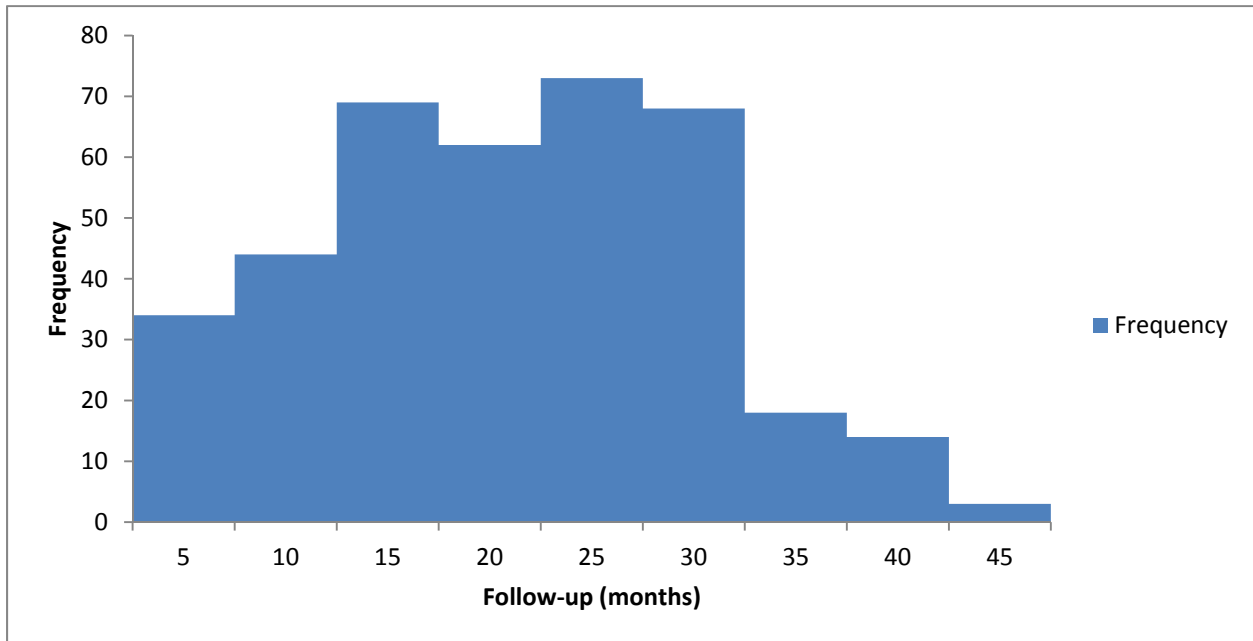
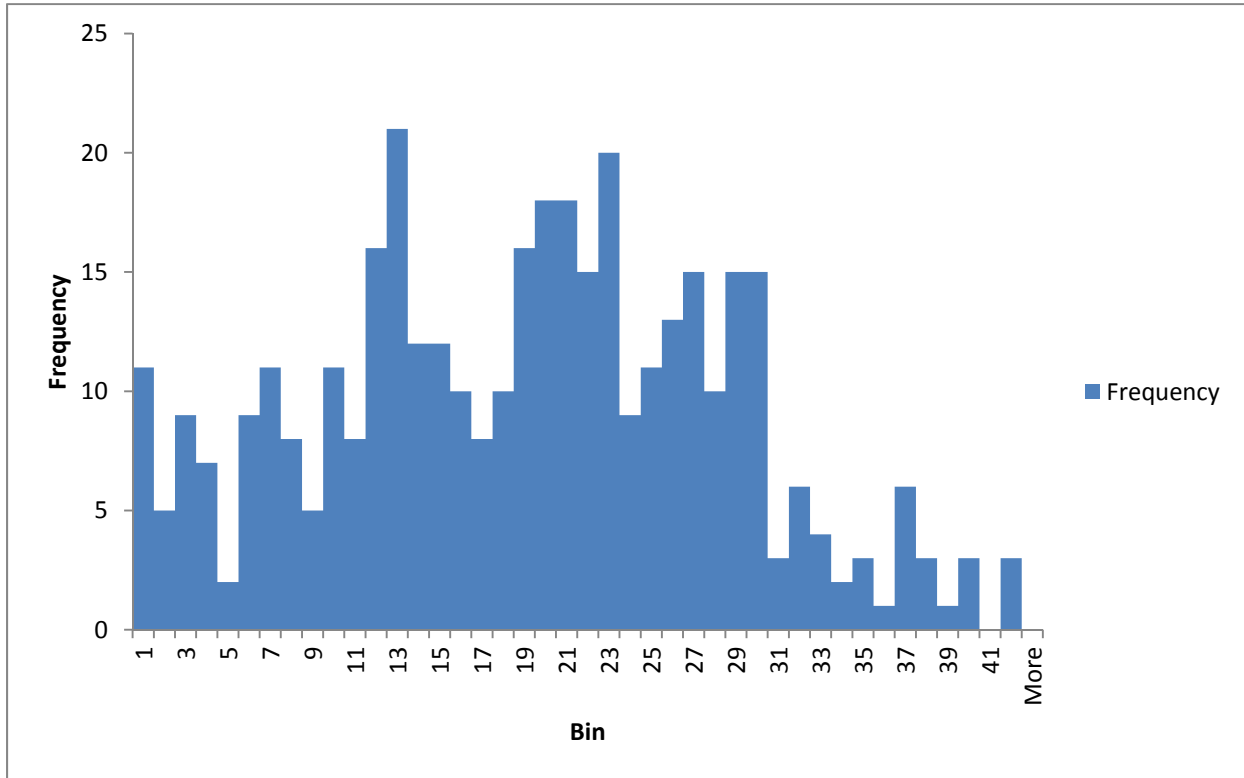


Figure A1. Number of months after baseline at which the restoration failed, grouped into 5-month increments.^a



^a This figure only includes the 386 restorations that failed during follow-up. The x-axis has category limits of 0-5 months, 6-10 months, 11-15 months, etc.

Figure A2. Number of months after baseline at which the restoration failed, grouped into one-month increments.^a



^a This figure only includes the 386 restorations that failed during follow-up. The x-axis has category limits of 0-1 month, more than 1 month but less than or equal to 2 months, more than 2 months but less than or equal to 3 months, etc.