

March 2016



# Network News



News Items

Member Forum

Quick Poll  
Results

Study Results

Member of the  
Month

Article of  
Interest

Quick Poll -  
Special Care  
Dentistry

There's still time to  
participate in the  
February [Quick Poll](#).

## News Items

**Coming April 2016! New Network Website**



We heard you and it's coming! We are delighted to announce that the National Dental PBRN will be launching its newly redesigned website next month. With a user-friendly design and navigation, the website will provide news, study information, resources and more to better serve you. We encourage you to bookmark it, check back often and connect with us on [Facebook](#), [Twitter](#) and [LinkedIn](#) to receive notices when updates and new content are added.

## Member Forum

**Join the Member Forum Discussion on  
Diabetes Screenings March 1-4!**

The field of special care dentistry applies to many types of patients, including those with "physical, medical, developmental, or cognitive conditions which limit their ability to receive routine dental care."

Please complete this poll on dental care for patients who may present with special needs by March 8!

**Recently moved?  
New contact  
information?**

Exciting things are happening in The Network. Stay updated and in the know by emailing your Regional Coordinator your updated information.

[Join our Mailing List](#)



Do you think dentists can play a role in helping patients understand the effect of diabetes on oral health? This week, authors of the Quick Poll results on integrated diabetic care will be moderating a multiday discussion on the [Member Forum](#). Join the conversation March 1-4 to explore challenges and advantages of glucose testing at a dental office.

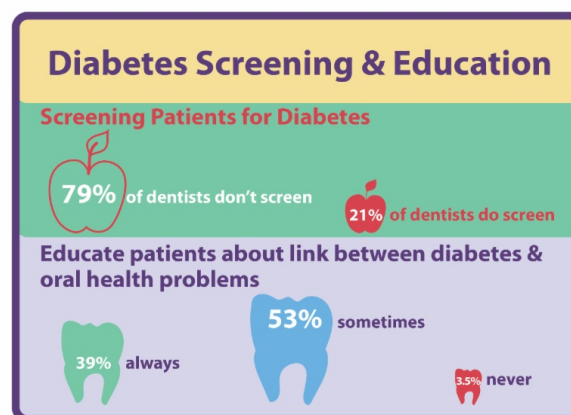
First time joining a conversation on the Forum? Take a look at our [step by step instructions](#).

[Read more...](#)

## Quick Poll Results

### Quick Poll Results: Do You Screen for Diabetes?

Most dentists don't test their patients' blood sugar levels but say it would be a good idea, our December 2015 Quick Poll found. Almost 61 percent of the 391 respondents said a dentist should do chairside screening for diabetes, while 37 percent said they should not.



When asked how willing they would be to test their patients using a finger stick blood glucose test, 28 percent of respondents said very willing, 47 percent said somewhat willing, and 19 percent were unwilling.

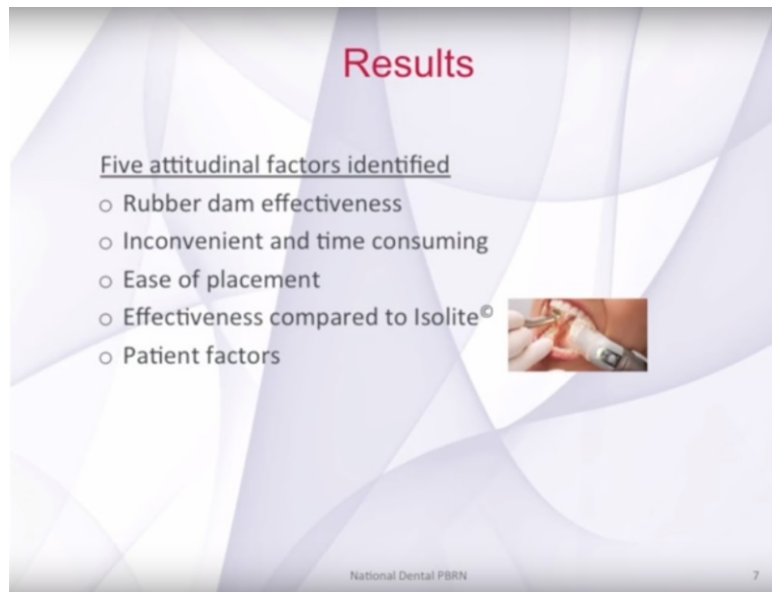
[Read more...](#)

---

## Study Results

### **Video: Results From Network Study: Isolation techniques used during root canal treatment**

In the next installment on the Network's YouTube channel, Dr. Gregg Gilbert, National Network Director, discusses results from the Network study on isolation methods used during root canal treatment. Dr. Gilbert reviews the results of the 33-item questionnaire posed of dentists regarding their attitudes towards rubber dam use in treatment.



Watch the [video](#) to learn more about the results. [Read more...](#)

---

### **New study to analyze research uses for electronic dental records**

With the help of Network dentists, researchers will explore the feasibility of using data collected from electronic dental records for clinical research, as part of a 3-year, \$1.2 million National Dental PBRN-funded study. One of the topics

the study will address is the possibility of combining data from electronic record systems that use different formats and operating systems.

The dental health topics the researchers will be collecting data on are:

- The long-term outcomes of posterior composite restorations
- Tooth loss following root canals.



From the electronic health records, the researchers will collect information on patients' demographics, reason for visit, medical and dental history, social history, and tooth characteristics and treatment. [Read more...](#)

---

## Member of the Month

### March Network Member Highlight: Jane Westberry

Being part of the National Dental Practice-Based Research Network is very satisfying. Local study club activity and being part of organized dentistry are great ways to share information, but the Network brings together information from practitioners all across the entire country. It makes so much sense to gather and compile practical knowledge from dentists in the field, then share that knowledge to promote dental health. I have been part of the cracked tooth study and the suspicious occlusal carries study, both of which evaluate concerns I have always had as a general dentist. [Read more...](#)



---

## Article of Interest

### **General Dentists Are Using Up-to-Date Endodontic Procedures, Materials**

General dentists (GDs) perform most endodontic procedures, including root canals, in the United States, but little has been known about what techniques they use and whether they are up-to-date on new materials and practices. A study of 1,490 GDs in The National Dental Practice-Based Research Network, published in the January 2016 Journal of the American Dental Association, found that most are following appropriate endodontic practices. Less than 3 percent used outdated techniques, irrigants, or fillers. [Read more...](#)