



Network News



Quick Poll Results

Article of Interest

Study Updates

Member of the Month

Quick Poll - Color in Dentistry

There's still time to participate in the June [Quick Poll](#) on "Color in Dentistry".

Recently moved? New contact information?

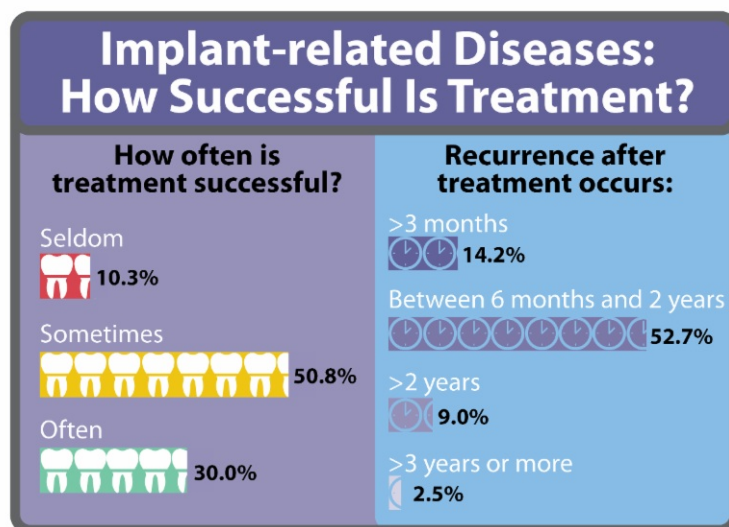
Exciting things are happening in The Network. Stay updated and in the know by emailing your Regional Coordinator your updated

Quick Poll Results

Quick Poll Results-Implant-related Diseases Tricky to Treat

Dentists are increasing their use of dental implants in lieu of traditional fixed and removable dental prostheses to replace missing teeth. Implant-related diseases, which are sometimes difficult to treat, are becoming a greater concern for dentists.

In our National Dental PBRN quick poll of dentists and hygienists, half of the 308 respondents said their treatment of perimucositis and peri-implantitis is successful about 50 percent of the time. Only 30 percent of respondents said treatment is successful often (about 75 percent of the time). [Read more...](#)



Study Updates

Studies Currently Recruiting Participants

- Factors for Successful Crowns

information.

[Join our Mailing List](#)

- Leveraging Electronic Dental Record Data for Clinical Research
- A Pilot Study to Evaluate Feasibility and Acceptance of Oral HPV Detection in the National Dental PBRN

[Read more...](#)

Article of Interest

What's Influencing Your Pain Management Decisions?

Dentists appear to be less influenced by patient age than physicians when assessing pain cues and deciding on pain treatment, according to a study using virtual human technology, published in the May 2016 Journal of Dental Education. But how much the health professionals considered the race, gender, and age of their "virtual human" (computer-generated) patients also varied by the providers' own race and gender, suggesting pain treatment decision making may be related to factors beyond professional training, including cultural differences.

In the study, 152 participants (76 physicians and 76 dentists) watched short videos of 32 virtual human (VH) patients of different races, genders, ages, and levels of pain expression paired with short text-based vignettes describing professionally appropriate clinical scenarios. [Read more...](#)

Member of the Month

August Network Member of the Month: Diana P. Wood

During the past several months I took part in the National Dental PBRN study "Factors for Successful Crowns". What I have enjoyed most about participating is that it made me stop and think about the "why" of each step in the crown process. What are my criteria for selecting a crown? Why did I use the cement I chose? Why did I select one material over another? What are my criteria for selecting the crown design? We make Cerec crowns in our office and another question is why did I use or not use a

Cerec crown as opposed to having the crown made by our lab? Having practiced for more than 30 years I find that I make quick decisions without thinking about the reasoning behind them as I move from patient to patient. This study challenged me to question my decisions and to discuss the details of crown decisions with my team members and our patients. It added a different perspective to the daily treatment and brought out the "scientific" part of me. I thoroughly enjoyed participating in the study. [Read more...](#)

