

November 2015



Network News



News Items

Member Forum

Quick Poll
Results

Member of the
Month

Member
Highlight

Article of
Interest

Quick Poll -
Bruxism

There's still time to
participate in our
October [Quick Poll](#).

News Items

2015/2016 Annual Meeting of Practitioners

Each year, The Network regions host an annual meeting of practitioners to discuss proposed studies, studies in the field, and study results. However, to focus on making all of our studies a success, The Network will not be holding its usual 2015/2016 annual meeting this year.

The next year will prove to be an exciting time for The Network as we will be launching many new studies, and we encourage members to log into the Member Forum to ask questions, share best practices, discuss current studies, and connect.

[Read More...](#)

Member Forum

Join This Week's Live Convo With Dr. Mike McCracken!

From November 3 - 6, Dr. Mike McCracken, Principal Investigator for the study "Factors for Successful Crowns" will be hosting a conversation about the initial results from Part 1 of this study (see related abstracts [here](#) and [here](#)). Join the conversation on the [Member Forum](#) to discuss what factors into your decision on whether to recommend a crown for a patient, what materials you prefer, and the protocols you've found successful for your

Effective prevention, early detection and treatment of oral problems associated with bruxism require aggressive management by both dentist and patient. The results of [this poll](#) will help determine whether this issue merits further investigation by the Network.

**Recently moved?
New contact
information?**

Exciting things are happening in The Network. Stay updated and in the know by emailing your Regional Coordinator your updated information.

[Join our Mailing List](#)

practice.

First time joining a conversation on the Forum? Take a look at our [step by step instructions](#), which now include directions for changing your default Forum preferences (e.g., viewing the most recent post first and receiving notifications).

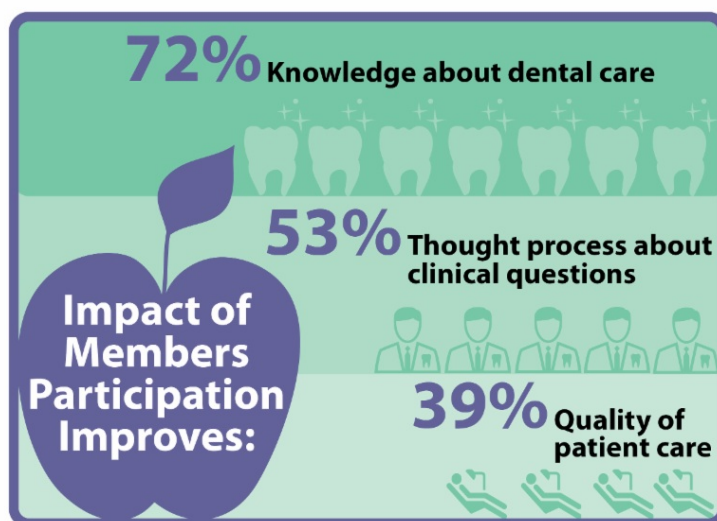
[Read More...](#)

Quick Poll Results

Quick Poll Results - Impact of Network Participation

In our August 2015 Quick Poll, members reported on The Network activities in which they participated and the impact of these activities. Of the 547 respondents, more than 80 percent had participated in a Network questionnaire study and read The Network's monthly newsletter. Almost half had read a journal article that reported on a Network study. About one third had attended a Network meeting of practitioners or participated in a Network clinical study.

[Read More...](#)



Member of the Month



November Member of the Month: Dr. Radha Sachdeva Munk

Since May 2012, Dr. Radha Sachdeva Munk has been an active member of The Network. She has

participated in numerous studies including Cracked Tooth Registry, Decision Aids for the Management of Suspicious Occlusal Caries Lesions, and the Management of Dentin Hypersensitivity.

[Read more...](#)

Member Highlight

November Member Highlight: Dr. Paul Benjamin

Soon after learning about The Network in 2005, Dr. Paul Benjamin joined its Executive Committee and has been an advocate for The Network and evidence-based



dentistry ever since. "Research must be rooted in everyday dental issues that are faced in day-to-day clinical practice," he wrote in [The Journal of Evidence-Based Dental Practice](#) in 2010.


He speaks frequently on the importance of The Network and evidence-based dentistry. He is a speaker at this year's [American Dental Association Evidence-Based Champions Conference](#), held November 3-4 in Washington, DC.

[Read more...](#)

Article of Interest

Taking a Consistent Approach to Existing Restorations

Dentists as a group vary considerably in their recommendations for repairing or replacing different types of restorations. But



individual practitioners are quite consistent, even when asked about hypothetical cases, a National Dental PBRN study shows. The study results are [published](#) in the November 2015 issue of *Journal of Dentistry*.

[Read more...](#)
